

15th May 2015

Significant Conductors and New Hootan Prospect identified from ongoing Geophysical Survey and Geological Review at Roe Hills Nickel Sulphide Project

- **Two significant conductors C1 and C2 have been identified in the Talc Lake area from the first phase of an ongoing and extensive MLEM geophysical survey at Roe Hills.**
- **The conductors are located within the same ultramafic sequence which hosts nickel sulphide mineralisation at Talc Lake 2km and 4km respectively to the north of previously reported nickel sulphide intersections, eg ROE 114: 1.0m @ 3.53% Ni (including 0.5m @ 6.15% Ni); RHDD0001: 4.3m @ 0.53% Ni (including 0.2m @ 2.66% Ni).**
- **An intensive geological review of historical data (Mindex; Wamex) has identified a previously unknown oxide zone intersection of 3m @ 1.7% Ni & 0.28% Cu from 28m depth in the same area. This constitutes a new prospect area along strike from Talc Lake that the Company has named the 'Hootan Prospect'.**
- **Recent field work re -located the gossanous horizon marking the surface expression of the Talc Lake mineralised zone which returned historical assays of 1.56% Ni; 5820ppm Cu, 1668ppb Pt and 265ppb Pd.**

Mining Projects Group Limited (ASX:MPJ) ("the Company") is very pleased to announce that the initial part of an ongoing and extensive Geophysical Moving Loop Electro Magnetic (MLEM) survey at MPJ's 100% owned Roe Hills Project ("Roe Hills") (Figure 1, 2 & 3) has identified **two significant conductors C1 and C2** (Figure 1.). **C1 and C2** are located within the same ultramafic sequence which hosts Nickel Sulphide mineralisation at Talc Lake 2km and 4km respectively to the north of previously reported Nickel Sulphide intersections, eg **ROE 114: 1.0m @ 3.53% Ni (including 0.5m @ 6.15% Ni); RHDD0001: 4.3m @ 0.53% Ni (including 0.2m @ 2.66% Ni).**

An intensive geological review being conducted to align with the current round of exploration has identified a **previously unknown oxide zone intersection** to the Company of **3m @ 1.7% Ni & 0.28% Cu from 28m depth**. Most significantly it is hosted within the same ultramafic horizon where **C1 and C2** have been identified (Figure 1.) This opens up a new prospect along strike to the North of Talc Lake that the Company has named the **'Hootan Prospect'**.

Newexco described the conductor C2 as follows ***"The anomaly is strong and has a time constant around 200ms. The modelled plate is rather large but still has a high conductance of ~3500S - which is consistent with massive sulphide accumulations."***

During a recent field trip the technical team re -located the gossanous horizon marking the surface expression of the Talc Lake mineralised zone which returned historical assays of **1.56% Ni; 5820ppm Cu, 1668ppb Pt and 265ppb Pd** (Figure 4). This is part of the accumulation of corresponding data providing the confidence in the emerging strategic targets.

The MLEM survey is in the very initial stages and is planned to continue heading south along the Talc Lake prospect. The Company is making preparations for the commencement of drilling in the coming weeks and we look forward to providing further information on the initial targets prior to commencement.

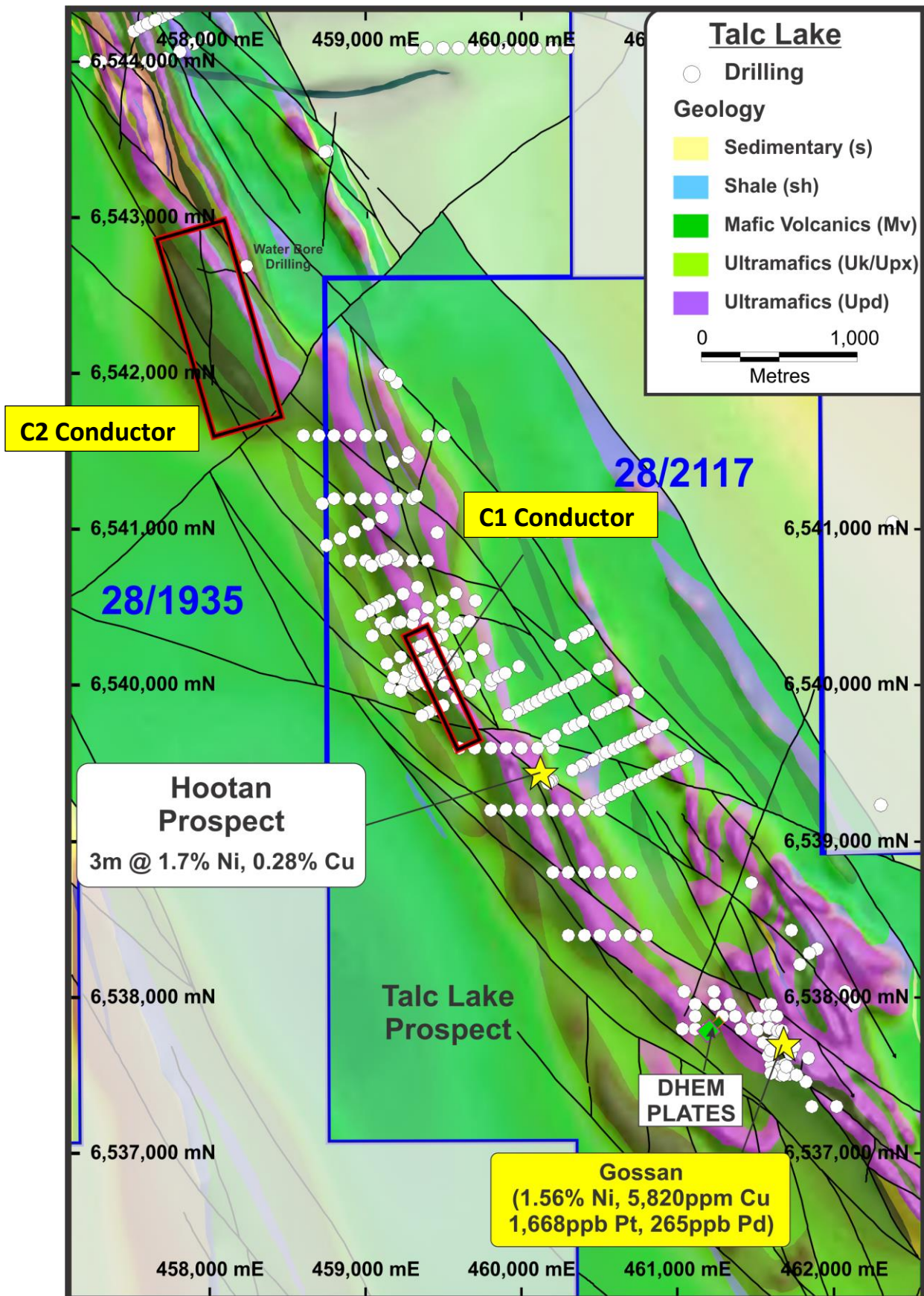


Figure 1: Geographical location of the MPJ projects

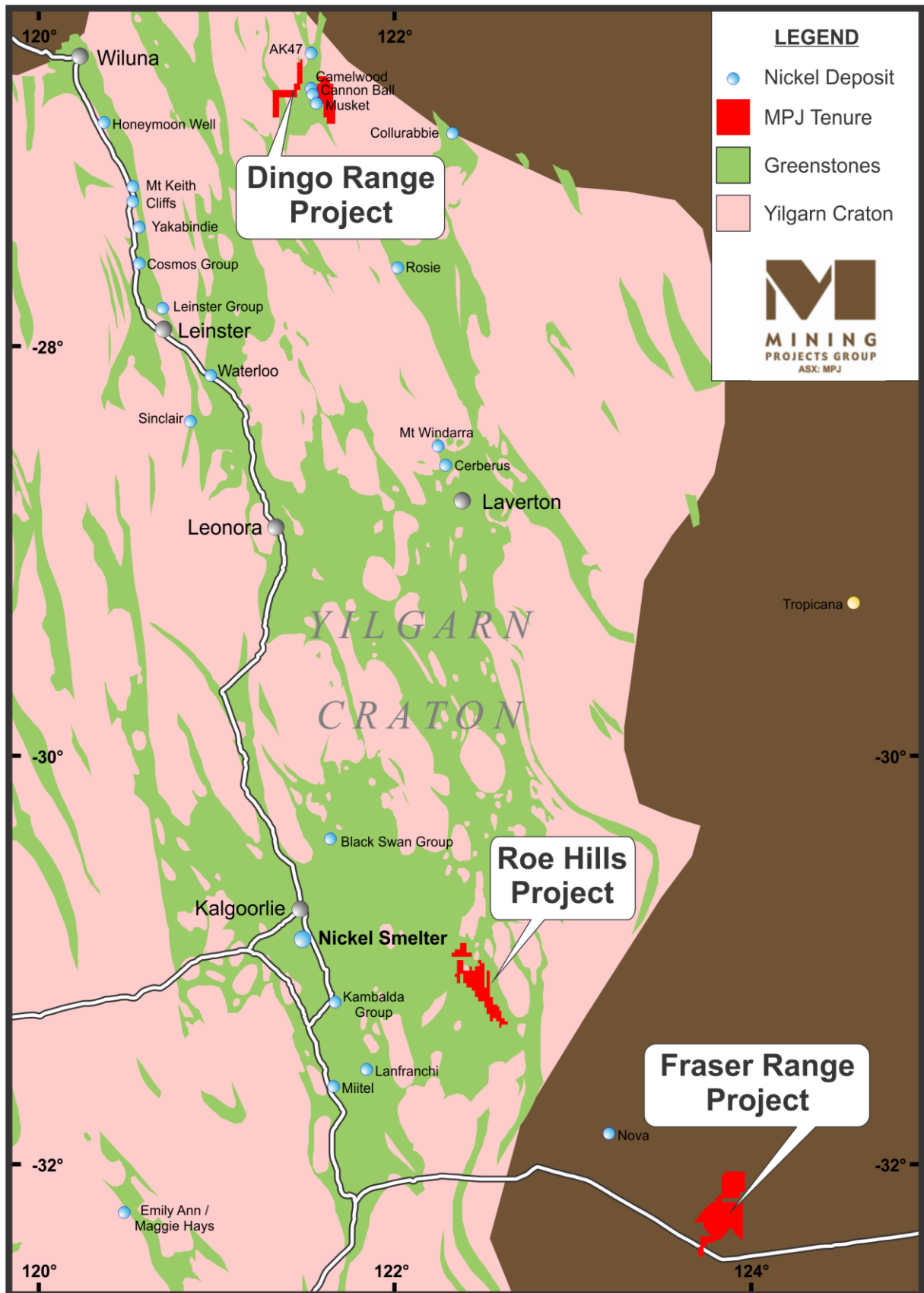


Figure 2: Geographical location of the MPJ projects

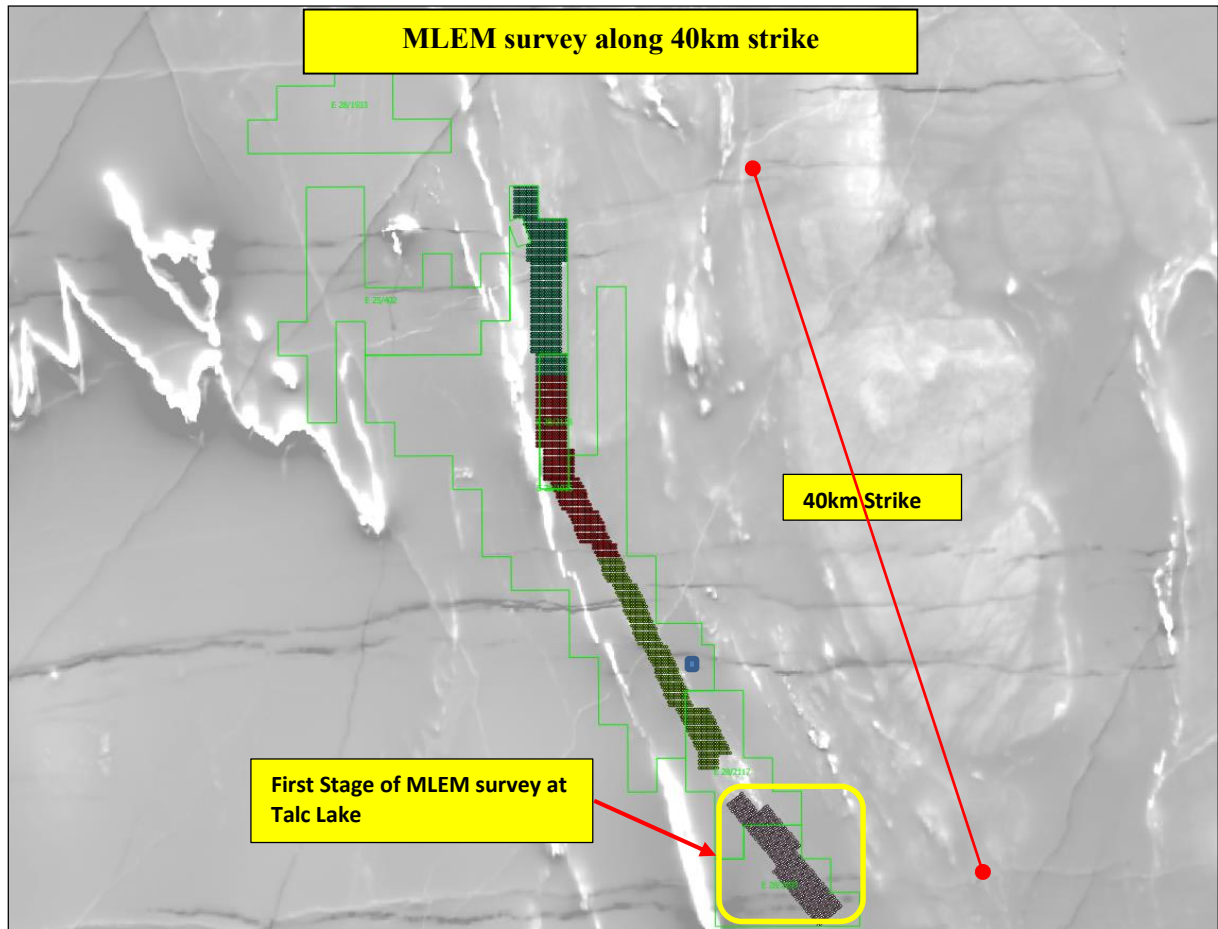


Figure 3: Planned MLEM survey covering the 40km strike of prospective ultramafic belt at Roe Hills.

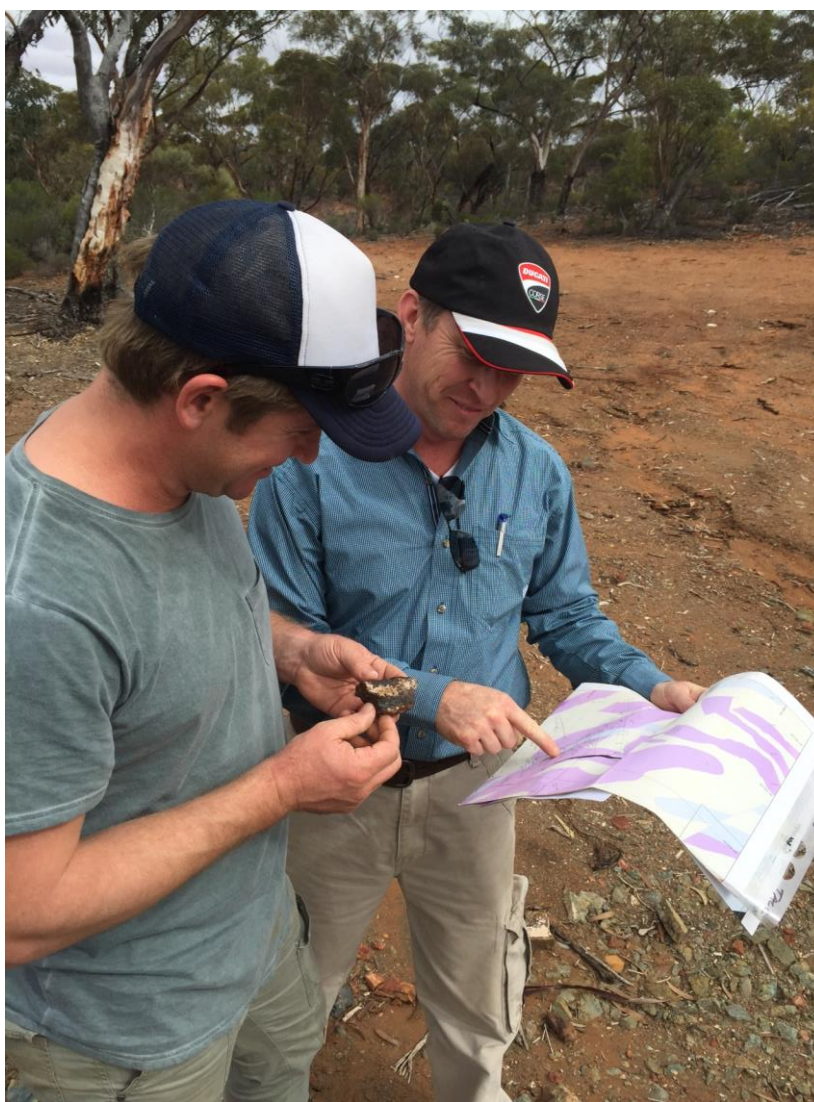


Figure 4: MPJ Directors examine Talc Lake Gossan sample.

Ends

For further information please contact:

Mr Joshua Wellisch
Managing Director
Mining Projects Group Limited

For online Information visit: www.miningprojectsgroup.com.au

COMPETENT PERSON STATEMENT:

Competent Person: The information in this report that relates to Exploration Results or Mineral Resources is based on information compiled and reviewed by Mr N Hutchison, who is a Non-Exec Director for Mining Projects Group and who is a Member of The Australian Institute of Geoscientists. Mr Hutchison has sufficient experience which is relevant to the style of mineralisation and type of deposits under consideration and to the activity which he is undertaking to qualify as a Competent Person as defined in the 2012 Edition of the 'Australasian Code for Reporting of Exploration Results, Mineral Resources and Ore Reserves.' (the JORC Code 2012). Mr Hutchison has consented to the inclusion in the report of the matters based on his information in the form and context in which it appears.

The Australian Securities Exchange has not reviewed and does not accept responsibility for the accuracy or adequacy of this release.