



14th May 2014

COMPANY ANNOUNCEMENT

MPJ Completes Fraser Range Survey and Commences Work at Dingo Range

- **Newexco has completed the first stage Moving Loop Electro Magnetic Survey (MLEM) at the Fraser Range East Project**
- **Newexco mobilised and has commenced the first stage MLEM Survey at the Dingo Range Project near Wiluna**
- **MLEM programme to test for potential nickel bearing bedrock conductors**
- **Concurrent Mobile Metal Ion (MMI) Soil Sampling being undertaken**

Mining Projects Group Limited (ASX:MPJ) (“the Company”) is pleased to announce that Newexco has completed the first stage of the Moving Loop Electro Magnetic Survey (MLEM) at MPJ’s Fraser Range East Project. Newexco has remobilised the geophysical crew to the Dingo Range Project near Wiluna (Figure 1) where they have commenced a similar MLEM programme. The MLEM programme has been designed to test for the presence of bedrock conductors which may be associated with nickel mineralisation in magnetic rocks paralleling the Camelwood/Musket Nickel trend (Figure 2).

The MLEM survey will be conducted utilising the following specifications:

Configuration:	Moving Loop
Line spacing:	400m
Loop Size:	200m
Line direction:	N-S
Station Spacing:	200m
Number Turns:	1
Components:	Bz, Bx and By
Base Frequency:	0.5Hz Coordinate
System – Projected:	GDA94/MGA51

Soil samples will also be taken at all stations to conduct Mobile Metal Ion (MMI) analysis, a form of low detection soil sampling. This form of sampling analyses the loosely bound ions attached to soil particles and allows for the detection of geochemical signals through cover and transported overburden.

Newexco have received the geophysical data and MMI samples from the Fraser Range survey and are currently processing the data. The MMI samples have been sent to the laboratory for analysis and the results of the survey will be reported to MPJ once Newexco have completed the processing.

The Dingo Range survey is expected to take approximately a week with analysis and reporting to follow. The Company looks forward to reviewing the data from both surveys and providing updates in the near future.

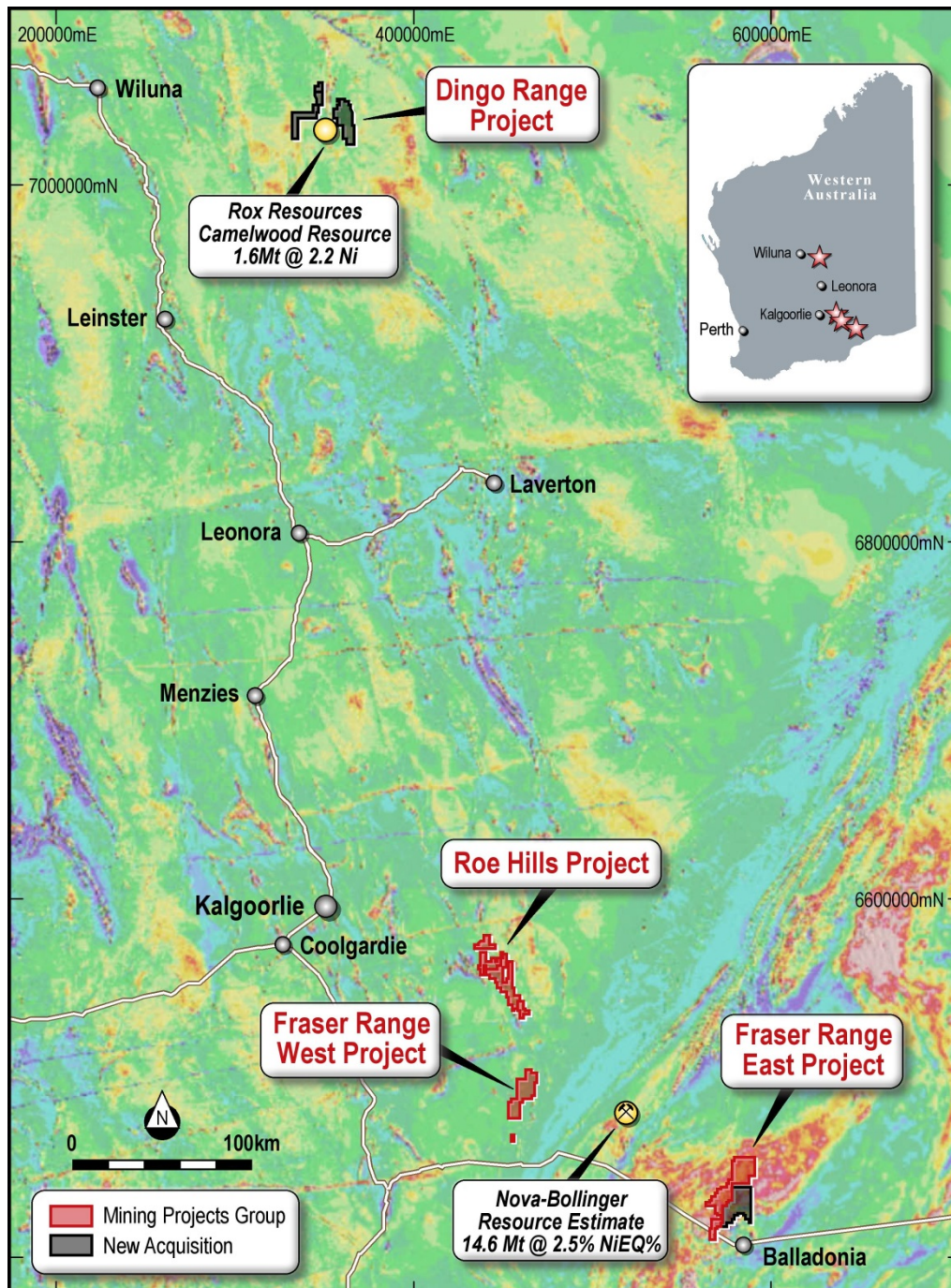


Figure 1. Location of MPJ tenements on regional aeromagnetic image.

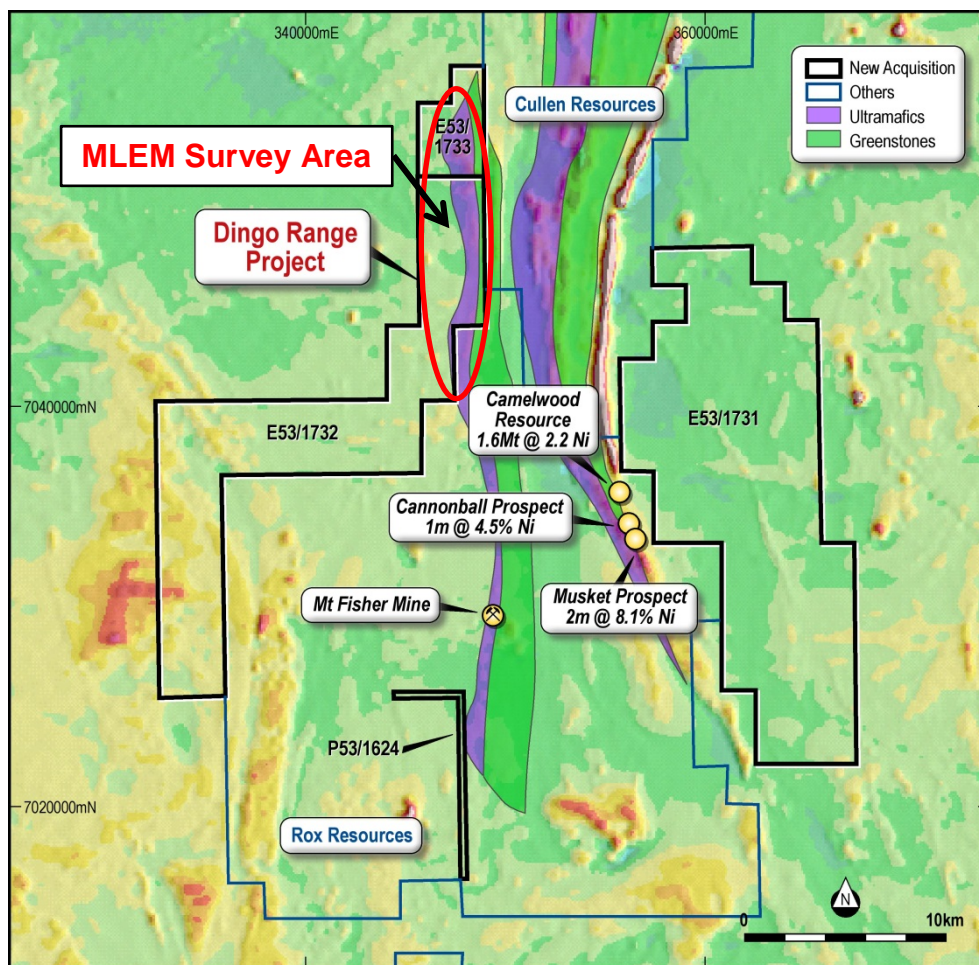


Figure 1. Stage 1 MLEM survey area over the priority aeromagnetic target zone which parallels the prospective Camelwood/Musket trend.

Camelwood Resource Details: Refer Rox ASX release, ASX: RXL of 3/10/2013 titled Maiden Camelwood Mineral Resource.

Nova-Bollinger Resource Details: Refer Sirius ASX releases, ASX:SIR of 20/3/2013 titled Maiden Nova Resource Estimate and 15/7/2013 titled Maiden Bollinger Resource and Scoping Study Update.

ENDS

For further information please contact:

Mr Joshua Wellisch
Managing Director
Mining Projects Group Limited

For online Information visit: www.miningprojectsgroup.com.au

COMPETENT PERSON STATEMENT:

Competent Person: The information in this report that relates to Exploration Results or Mineral Resources is based on information compiled and reviewed by Mr N Hutchison, who is a Non-Exec Director for Mining Projects Group and who is a Member of The Australian Institute of Geoscientists.

Mr Hutchison has sufficient experience which is relevant to the style of mineralisation and type of deposits under consideration and to the activity which he is undertaking to qualify as a Competent Person as defined in the 2012 Edition of the 'Australasian Code for Reporting of Exploration Results, Mineral Resources and Ore Reserves.' (the JORC Code 2012). Mr Hutchison has consented to the inclusion in the report of the matters based on his information in the form and context in which it appears.