

KAIROS

MINERALS

ASX Code: KAI

Mi Market
INSIGHTS

Lunchtime Series

Monday, 8th May 2023 | 12:30pm

Powered by:

JMM

ResolveIR

Media Sponsor:

Event Sponsor:

12-MICRON

3

Li
LITHIUM
6.941

Focussed on Lithium Discoveries + 1.1moz Au

Pilbara & Yilgarn, Western Australia

Dr Peter Turner - **Managing Director**



Major Gold Deposit in the Pilbara

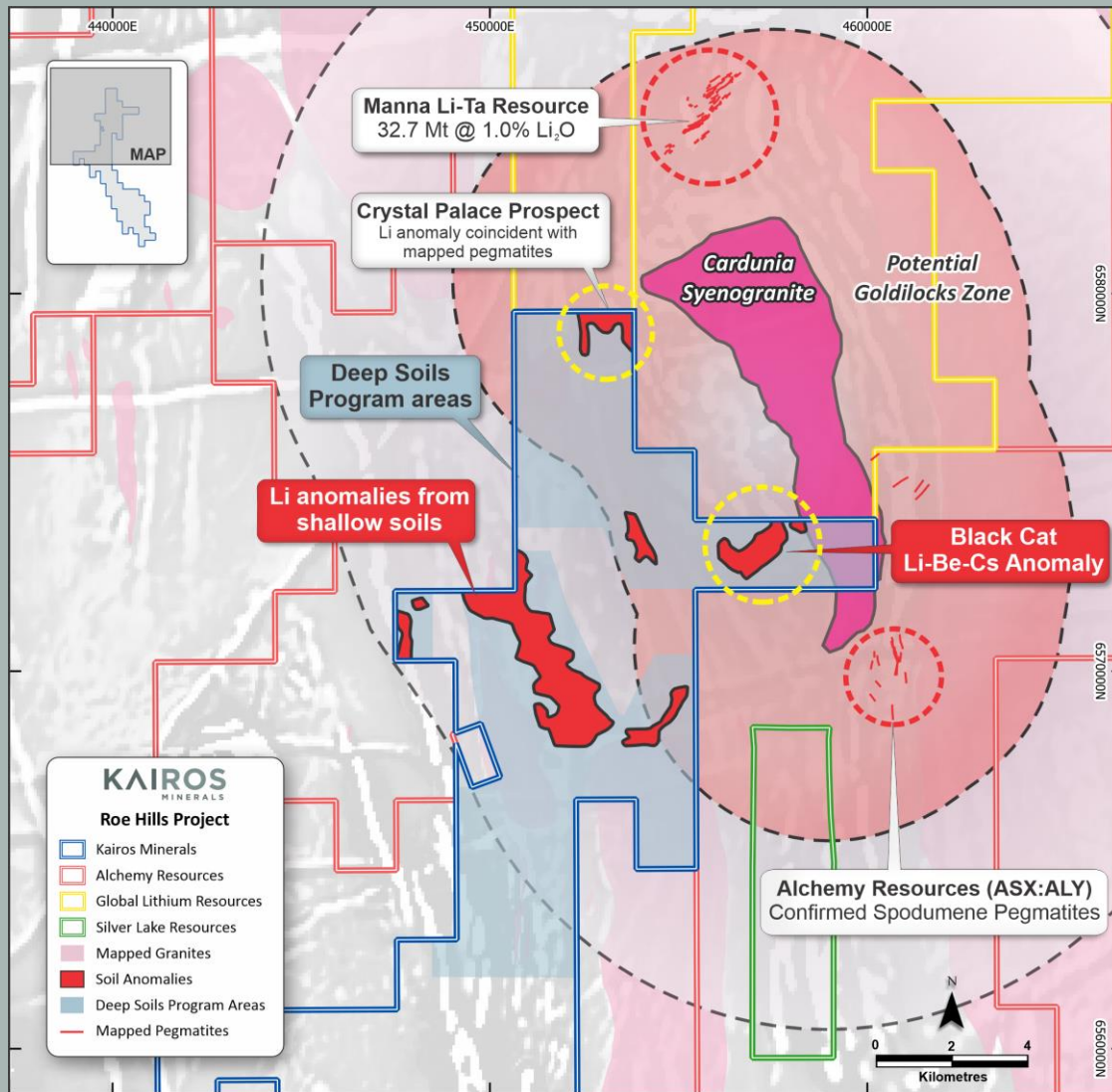
- 150km south of Port Hedland, 40km south of Hemi (ASX:DEG)
- Massive Archaean BIF-Gold system
- Mineralisation exposed at surface along 3,000m
- Mt York Resource: **28.01 Mt @ 1.23 g/t Au for 1,104,000 ozs¹**
- New mineral resource estimation expected May 2023
- Underpins KAI value (EV/resources of A\$38/ounce²)
- Mining Lease Applications (#2) submitted (Dec 2022)
- Studies, Stakeholder engagement to advance project
- Focussed on regional exploration in 2023



¹Refer to KAI press release dated 30 Aug 2022 entitled 'Gold resource increases 26% to 1.1 Moz'

²Based on a KAI Share Price of A\$0.022, cash balance as at end of Mar' 2023 of A\$1.34m and resources of 1,104,000 ounces

Roe Hills: Under Explored New Li Province



• Black Cat & Crystal Palace Prospects

- Big lithium address, 100km east of Kalgoorlie
- Manna Li Resource – 32.7 Mt @ 1.0% Li₂O (ASX:GL1)
- Spodumene reported to SE of Cardunia Syenogranite (ASX:ALY)
- Kairos targeting spodumene pegmatites on western flank
- Large Li anomalies, coincident pathfinder elements (Cs, Be, Rb, Sn)
- Black Cat : 2,800m long, strikes NE
- Crystal Palace : +500m long, SW extension of Manna?
- Lookalike auger anomalies (Li-Be-Cs-Rb-Sn) to Manna
- Anomalies have same strike, same geology as Manna
- Heritage Agreements advanced
- 4,000m RC drilling planned
- Auger sampling to continue, covering prospective granites
- Newsflow

Lithium focus near Manna Li Deposit

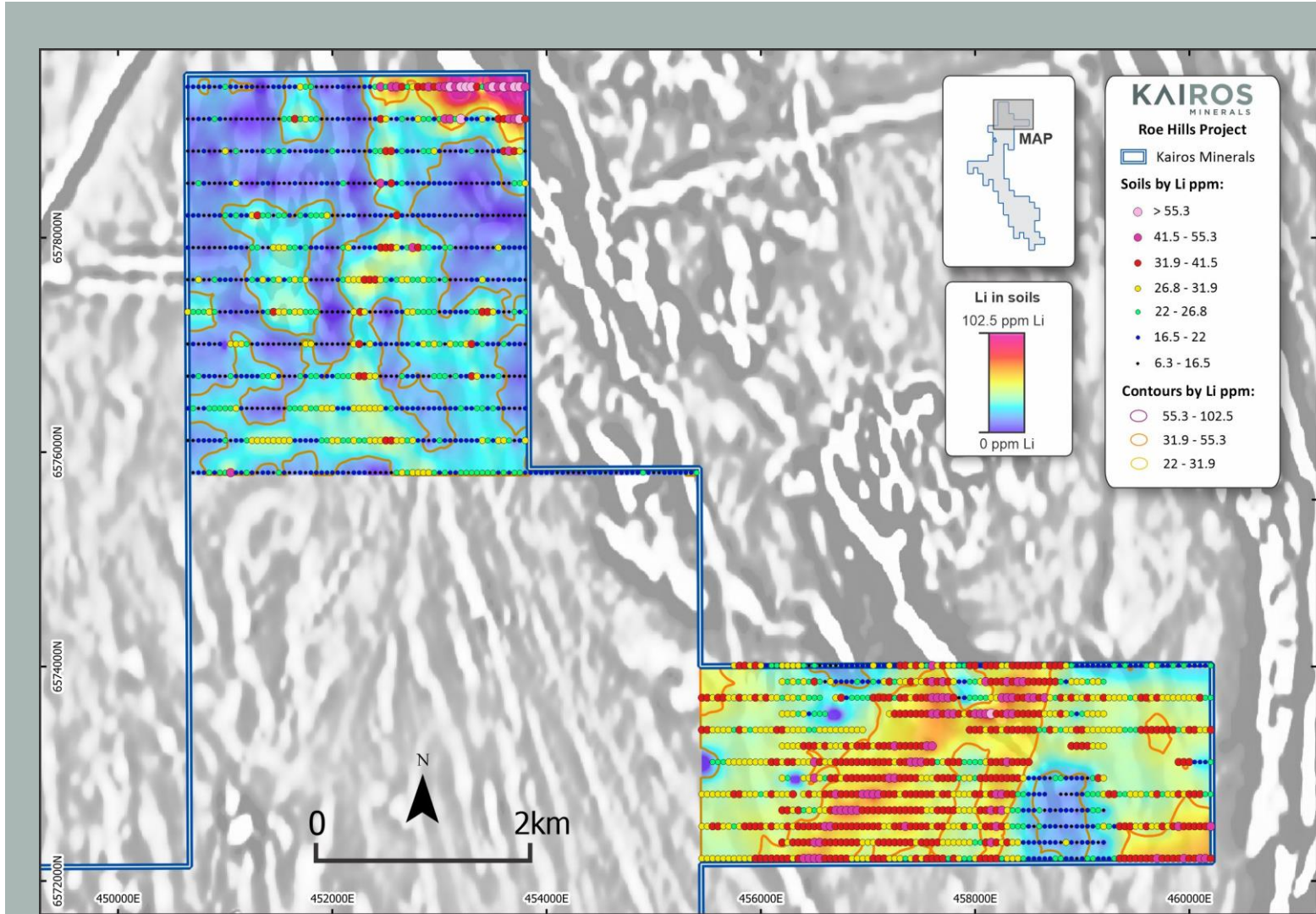
• Black Cat

- Multiple soil sampling results^{1,2} show consistent 2,800m long Li anomaly
- Similarities to the Manna Li deposit 10km to the north
- Heritage Agreements advanced
- Highest priority drill targets
- 4,000m RC drilling scheduled

• Crystal Palace

- High-grade Li-Cs-Be-Sn anomalism
- SW extension of Manna(?)
- Mapped pegmatites
- Lepidolite reported

¹Refer to KAI press release dated 15 February 2022 entitled 'Extensive lithium and pathfinder elements anomaly defined at Roe Hills Project – East Kalgoorlie'
²Refer to KAI press release dated 4 April 2023 entitled 'Infill soil sampling confirms compelling 2.8km lithium anomaly'



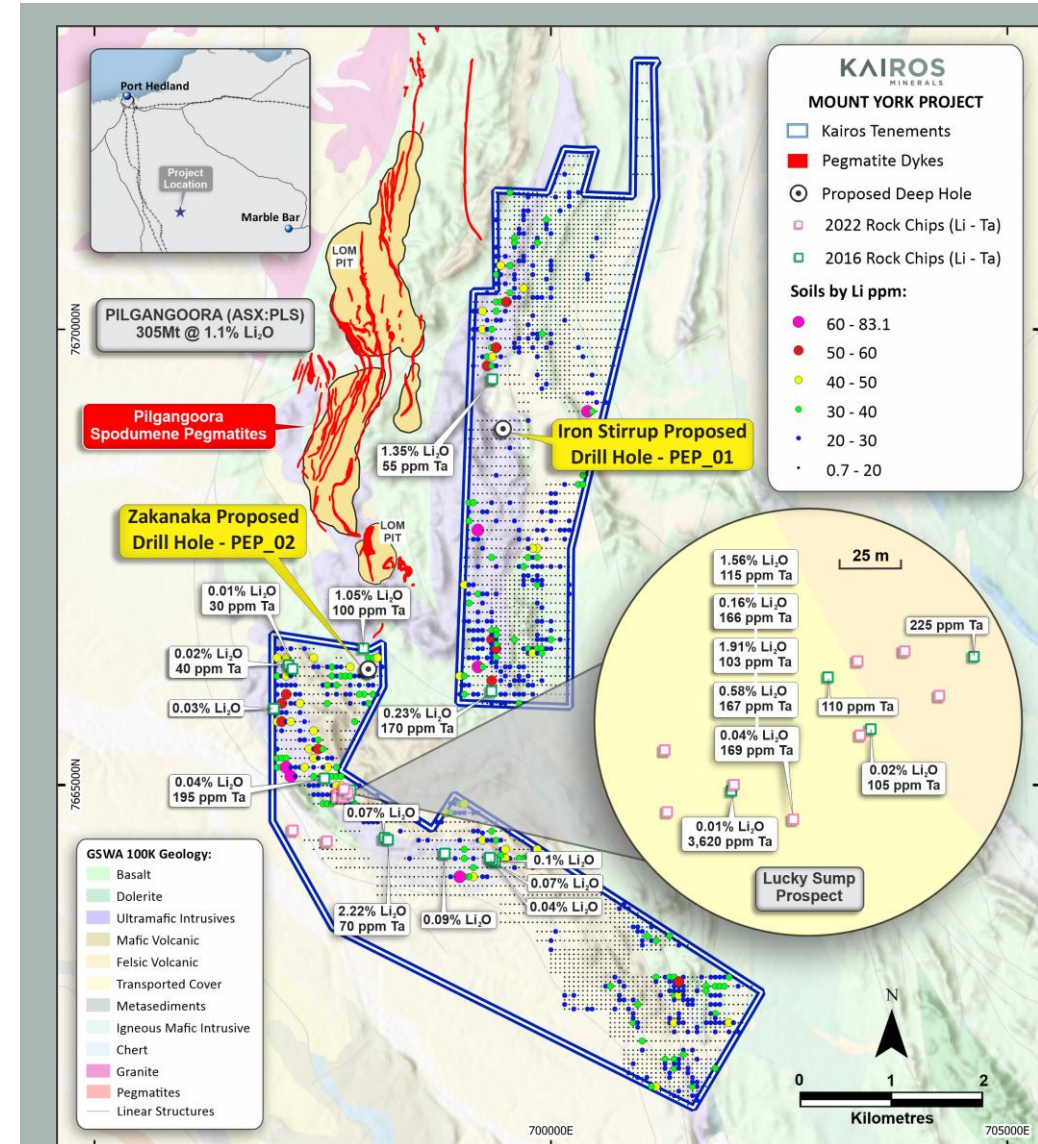
Pilbara Lithium: Pilgangoora Extension Project

- **Testing the world-class Pilgangoora Li pegmatite swarm**

- Mt York neighbours Pilbara Minerals Ltd (ASX:PLS) Pilgangoora Mine (305 Mt @ 1.1% Li₂O) (red on map)
- Huge spodumene pegmatite system dips 40° towards east
- KAI rock chip sampling confirms spodumene pegmatites¹
- Large pegmatite sheets could extend into KAI tenements
- PLS confirmed to be drilling up to KAI boundary
- World-class lithium target
- Exploration techniques examined: seismics, drilling
- Potential game-changer for KAI

- **Timing**

- Drilling scheduling June/July 2023

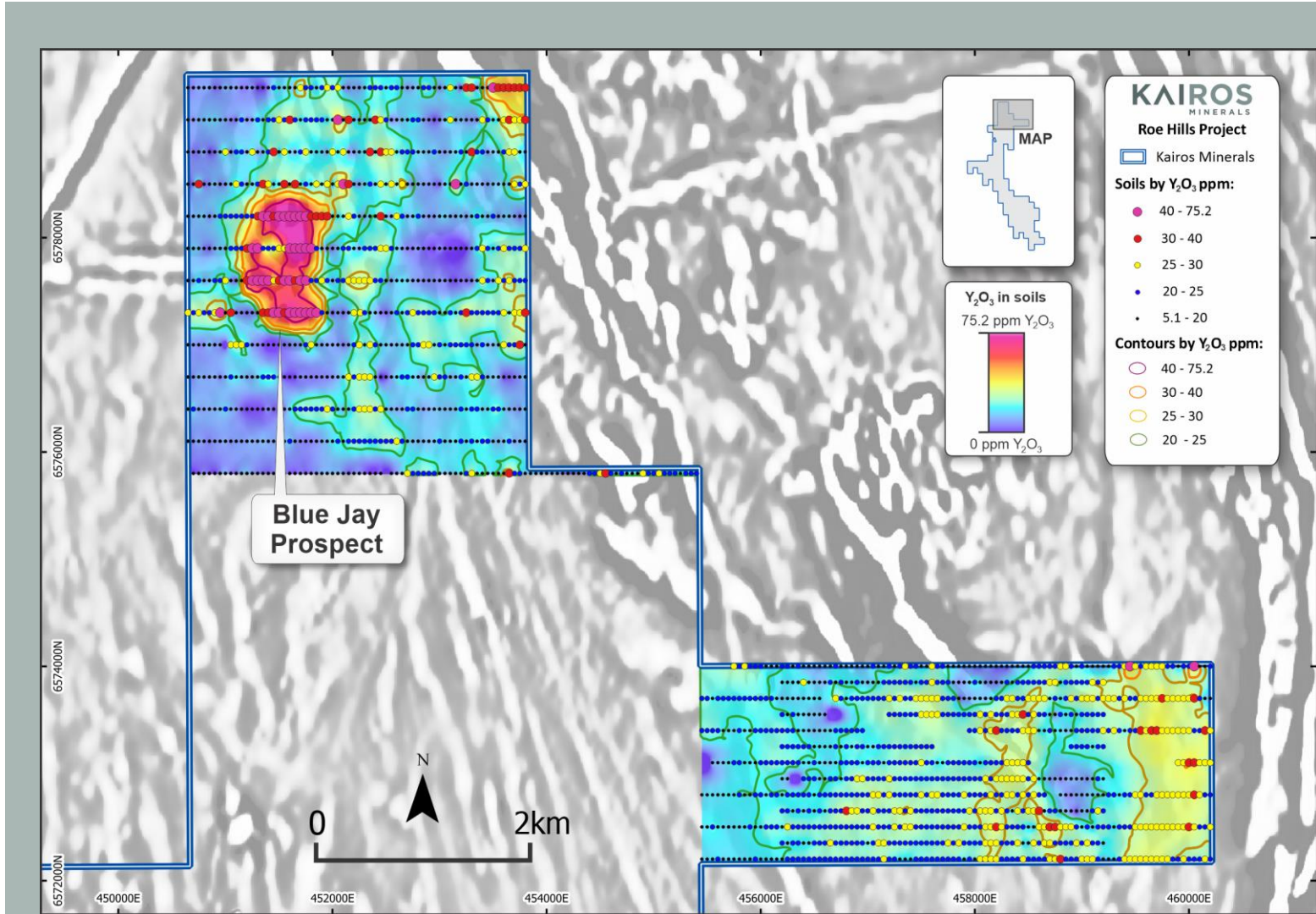
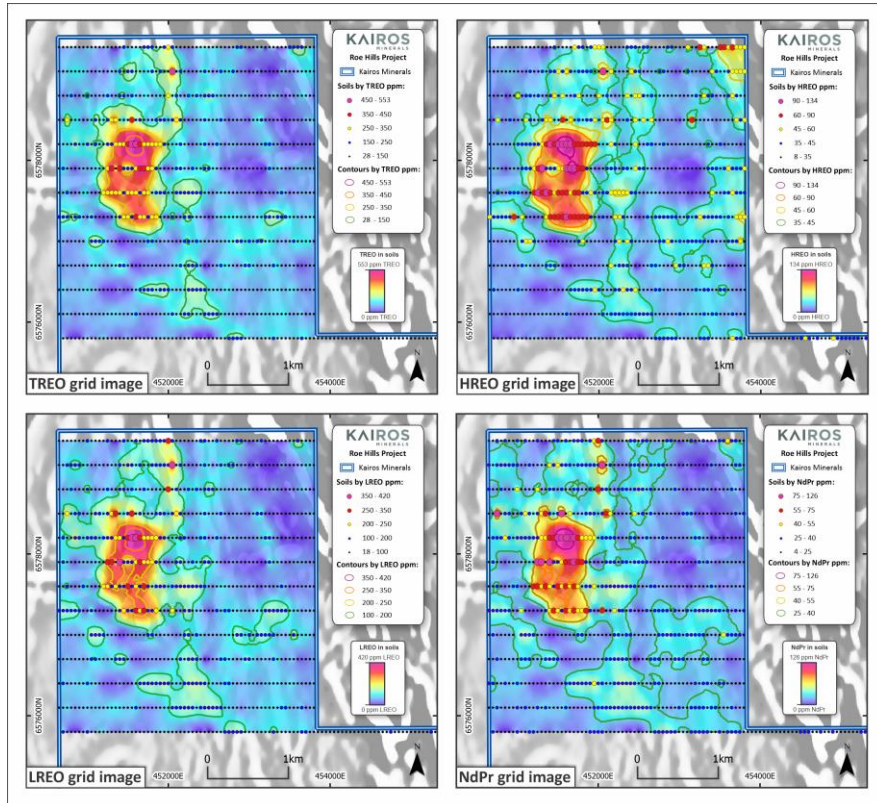


Map contains information compiled from ASX:PLS December 2021 quarterly report on the location of Pilgangoora pegmatites and LOM pits; ¹For KAI rock chip information refer to KAI press release dated 7 June 2016 entitled 'High-grade lithium and tantalum confirmed at Kairos' Mt York project in WA's Pilbara' and 1 August 2022 entitled 'High-grade lithium assays confirm significance of spodumene-bearing pegmatite'.

Rare Earth Elements: a welcome surprise

• Blue Jay

- 1000 x 600m LREE, HREE anomaly¹
- Right geology
- Early stage, encouraging
- 500m RC drilling scheduled



¹Refer to KAI press release dated 13 April 2023 entitled '1km-long rare earths anomaly highlights potential for significant discovery'

CONTACT DETAILS

Dr Peter Turner – Managing Director



+61 458 855 240



info@kairosminerals.com.au

Axino Media GmbH (Germany) – Wolfgang Seybold




+49 711 82 09 72 11

Read Corporate (Australia) – Paul Armstrong



+61 421 619 084

ASX: KAI / F: YAJ  <https://www.linkedin.com/company/Kairos-minerals-ltd>



@KairosMinerals



www.kairosminerals.com.au – Sign up to our Mailing List

Disclaimer & Competent Person Statement

The information contained in this confidential document ("Presentation") has been prepared by Kairos Minerals Limited (the "Company"). It has not been fully verified and is subject to material updating, revision and further amendment.

While the information contained herein has been prepared in good faith, neither the Company nor any of its shareholders, directors, officers, agents, employees or advisers give, have given or have authority to give, any representations or warranties (express or implied) as to, or in relation to, the accuracy, reliability or completeness of the information in this Presentation, or any revision thereof, or of any other written or oral information made or to be made available to any interested party or its advisers (all such information being referred to as "Information") and liability therefore is expressly disclaimed. Accordingly, neither the Company nor any of its shareholders, directors, officers, agents, employees or advisers take any responsibility for, or will accept any liability whether direct or in-direct, express or implied, contractual, tortious, statutory or otherwise, in respect of, the accuracy or completeness of the Information or for any of the opinions contained herein or for any errors, omissions or misstatements or for any loss, howsoever arising, from the use of this Presentation.

Neither the issue of this Presentation nor any part of its contents is to be taken as any form of commitment on the part of the Company to proceed with any transaction and the right is reserved to terminate any discussions or negotiations with any prospective investors. In no circumstances will the Company be responsible for any costs, losses or expenses incurred in connection with any appraisal or investigation of the Company. In furnishing this Presentation, the Company does not undertake or agree to any obligation to provide the recipient with access to any additional information or to update this Presentation or to correct any inaccuracies in, or omissions from, this Presentation which may become apparent.

This Presentation should not be considered as the giving of investment advice by the Company or any of its shareholders, directors, officers, agents, employees or advisers. Each party to whom this Presentation is made available must make its own independent assessment of the Company after making such investigations and taking such advice as may be deemed necessary. In particular, any estimates or projections or opinions contained herein necessarily involve significant elements of subjective judgment, analysis and assumptions and each recipient should satisfy itself in relation to such matters.

Neither this Presentation nor any copy of it may be (a) taken or transmitted into the United Kingdom, Canada, Japan or the United States of America, their territories or possessions; (b) distributed to any U.S. person (as defined in Regulation S under the United States Securities Act of 1933 (as amended)) or (c) distributed to any individual outside Australia, Canada or Japan who is a resident thereof in any such case for the purpose of offer for sale or solicitation or invitation to buy or subscribe any securities or in the context where its distribution may be construed as such offer, solicitation or invitation, in any such case except in compliance with any applicable exemption. The distribution of this document in or to persons subject to other jurisdictions may be restricted by law and persons into whose possession this document comes should inform themselves about, and observe, any such restrictions. Any failure to comply with these restrictions may constitute a violation of the laws of the relevant jurisdiction.

Competent Person Statement

The information contained in this report relating to Exploration Results, and Minerals Resources has been previously reported by the Company as set out in the respective references within the presentation (Announcements). The Company confirms that it is not aware of any new information or data that would materially affect the information included in the Announcements and, in the case of estimates of Mineral Resources, released on 30 August 2022, that all material assumptions and technical parameters underpinning the estimates continue to apply and have not materially changed.